

A Dissection of Trading Capital: Trade in the Aftermath of the Fall of the Iron Curtain

Matthias Beestermöller and Ferdinand Rauch^{*†}

This version: February 26, 2015

Abstract

We study trade in Europe after the fall of the Iron Curtain, and show that the countries of the former Austro-Hungarian monarchy trade significantly more with one another after 1989 than predicted by a standard gravity model. This trade surplus declines linearly and monotonically over time. We argue that the most likely explanation is that these forces relate to historical legacies and cultural memory. Trading capital, established under Habsburg rule, seems to have survived over four decades of separation and gives an initial boost to trade. This surplus trade disappeared rapidly as countries rearranged themselves with the new geopolitical circumstances. We document the rate of decay of these forces.

Keywords: Trade, Gravity, Habsburg Empire

JEL codes: F14, F15, N33, N34, N94

^{*}This paper has been improved by the comments and suggestions of numerous colleagues and seminar participants including but not limited to James Anderson, Daniel Baumgarten, Tibor Besedes, Johannes Van Biesebroeck, Carsten Eckel, Peter Egger, Thibault Fally, Lisandra Flach, James Harrigan, Keith Head, Harald Heppner, Beata Javorcik, Amid Khandelwaal, Helmut Konrad, Thierry Mayer, Guy Michaels, Peter Neary, Chris Parsons, Steven Poelhekke, Monika Schnitzer, Jens Südekum, Pierre-Louis Vezina as well as seminar and conference participants from the LETC conference in Slovenia, Paris, Göttingen, ETSG Munich, Vienna and Zurich for helpful comments. Matthias Beestermöller gratefully acknowledges financial support from the GRK 1928 and the Egon-Sohmen-Foundation.

[†]Affiliations: Rauch (corresponding author): Oxford University, ferdinand.rauch@economics.ox.ac.uk; Beestermöller: Ludwig-Maximilians-University of Munich, matthias.beestermoeller@econ.lmu.de.

1 Introduction

In 1989 the Iron Curtain fell quickly and surprisingly, ending the separation between Western Europe and the Soviet Union. After 44 years of an almost completely sealed border, trade was suddenly free to reconnect. Despite the political and economic turmoil within the Eastern regimes, trade between West and East almost doubled within five years after 1990. By the year 2000 it had almost tripled. We study this trade in the aftermath of the collapse of the Soviet Union. We pay special attention to Austria, a country that has engaged in trading opportunities beyond what would be expected given its size and geographic location, and might have been the main western beneficiary of the European economic eastwards expansion. In a standard gravity equation setting we document that Austria indeed trades more with countries east of the Iron Curtain after 1990 than gravity would predict. We find that this effect is mainly found for the members of the former Habsburg Empire¹. It declines linearly and monotonically, and in our preferred specification becomes statistically insignificant after a decade while the predicted magnitude becomes zero after two decades. This trade surplus is not visible for trade relationships between Austria and the other countries east of the Iron Curtain once we additionally control for the Habsburg effect. The magnitude of the Habsburg surplus trade in 1990 is very large, about four times the effect of a monetary union. We find no similar surplus trade for other western countries with the East. We argue that these results can best be explained by assuming a deterioration of specific components of ‘trading capital’ built up during the Habsburg years. 44 years of Iron Curtain division cut all formal and business relationships, almost all trade between East and West, and made personal contacts very costly. However, historical legacies and cultural linkages persists and a Habsburg trade surplus survives. Its decline reflects the continued dissolution of trading capital and the build-up of trading capital with other countries of Western Europe.

¹Throughout this paper we use the terms ‘Habsburg monarchy’, ‘Habsburg Empire’ and ‘Austro-Hungarian monarchy’ interchangeably, knowing that Austro-Hungary is only valid since 1867. We usually refer to the Empire in its extension shortly before World War I, as displayed in Figure 1. Former Habsburg members include Austria, Bosnia and Herzegovina, Croatia, Czech Republic, Hungary, Italy, Poland, Romania, Serbia, Slovakia, Slovenia and the Ukraine to differing degrees as detailed in Table 1 and Figure 1.

The term ‘trading capital’ is introduced by Head, Mayer and Ries (2010, from here on we refer to this paper as HMR) who show that after independence former colonies continue to trade for a long period with their colonizers, at a declining rate. They suggest that this observation might point to the presence of trading capital that is built up during colonization, and deteriorates after independence. Trading capital consists of various components, that we can divide into three broad categories that facilitate trade: (i) physical capital, such as roads, railway lines or pipelines that connect countries and directly facilitate trade through reduced bilateral trade costs, (ii) capital relating to personal communication, direct human interaction and contacts or trust built up in repeated games, such as provided in structures of multi-national firms, joint ventures or by frequent personal contacts and trust won through repeated interaction, and (iii) all other variables that facilitate trade, that are not based on personal interaction and formal or physical structures. These include all notions of cultural familiarity, such as facilitated by cultural norms, language, history, consumers’ familiarity with products, trust based on similarity and familiarity of people. In the case of the Habsburg Empire this may relate to people in whose minds the Habsburg monarchy was the last functioning state before the hardship of the wars and communism. This may have created a brief nostalgic impulse to return to the old state of affairs when the possibility came. Indeed, below we verify a positive Habsburg bias in the cultural data by Felbermayr and Toubal (2010). Category (iii) may also include past decisions on institutional design and standards as basic as which side of the road to drive on or what type of light bulbs to adopt. However these latter effects are less relevant in the present example as such standards were fully harmonized across continental Europe by 1990.

We argue that the declining trade surplus of Habsburg countries after 1989 is comparable to the dissolving trading capital described by HMR, but given the history of Central Europe only relates to that part of trading capital that was not isolated by the Iron Curtain, the elements described in point (iii). At the beginning of the century the Habsburg monarchy was a politically and economically well integrated country. In the second half of the century it was split into two parts that were strictly separated for 44 years by the Iron Curtain. During the separation

all formal institutions of the Empire ceased to exist as there were several waves of drastic institutional changes especially east of the Iron Curtain. Personal relationships were hard to maintain, multinational firms connecting East and West and other formal institutions were broken apart. Physical transport capital such as railway lines, pipelines and roads - already badly damaged in WWII - were deliberately destroyed, or left to deteriorate. At the same time institutions and norms converged both within the East and within the West of the Iron Curtain into two distinct blocks. The historical circumstances thus offer a natural experiment setting in which trade between members of the former Habsburg Empire permits us to observe some components of trading capital only. In particular, any surplus trade observed after 1989 will overwhelmingly include those parts of trading capital that relate to point (iii) above. Comparing these effects to HMR we find that these forces explain a quantitatively large part of trading capital, and that they deteriorate at a rate smaller than suggested for all trading capital by HMR.

Our paper adds to the literature showing that the degree to which such cultural forces influence trade seems to be large (for example Algan et al. 2010, Disdier and Mayer 2007, and Michaels and Zhi 2010), linkages between countries are highly persistent once built up (McCallum 1995 and Anderson and Van Wincoop 2003) and trade once interrupted takes a long time to recover (Felbermayr and Gröschl 2013, Nitsch and Wolf 2011). There have been suggestions that culture matters more for trade than either institutions or borders (Becker et al. 2011). Our paper also adds to a growing literature which emphasizes the long persistent effects of borders, institutions and culture. Guiso et al. (2009) establish the importance of trust and cultural similarity on economic exchange. Egger and Lassmann (2013) and Melitz and Toubal (2012) document the importance of common languages. However, it is difficult to distinguish between cultural similarity and ease of communication. Cultural proximity is inherently difficult to measure. A number of recent studies have thus used proxy measures such as voting behavior in the Eurovision Song Contest (Felbermayr and Toubal 2009) or the United Nations General Assembly (Dixon and Moon 1993, Umana Dajud 2012). Lameli et al (2013) show that the similarity of German dialects is an important predictor of trade within Germany. We add to

this literature by providing an example and new measure of both the resilience of such effects on trade, as well as its decline.

Our paper's methodology is related to Redding and Sturm (2008), who study the development of towns in West Germany and use the fall of the Iron Curtain as natural experiment. Nitsch and Wolf (2011) document that it takes between 33 to 40 years to eliminate the impact of the Iron Curtain on trade within Germany. Our paper mirrors Nitsch and Wolf (2011): While they show that borders remain visible in trade statistics long after they are abolished, we demonstrate that borders take a long time to diminish trade when newly constructed. Djankov and Freund (2002) document that Russian regions continued to trade with each other 60 per cent more in the period from 1994 to 1996, which is broadly consistent with our findings. Schulze and Wolf (2009) study trade within the Habsburg monarchy in the late 19th century and find that borders that later emerge become visible in price data long before the collapse of the Empire. Thom and Walsh (2002) study the trade effect of Anglo-Irish monetary dissolution. Becker et al. (2011) also present evidence on the importance of the Habsburg Empire on cultural norms. When comparing individuals living east and west of the long-gone Habsburg border, they find that people living on territory of the former Habsburg Monarchy have higher trust in courts and police. They argue that the former Empire had an enduring effect on people's values through its decentralized, honest and widely accepted state bureaucracy.

Trade is only one of many possible measures that could be influenced by historical legacies and cultural persistence. Migration and FDI might be others. Like HMR we chose to discuss this effect in terms of trade given that trade is recorded in a more consistent way and at a higher frequency than these other measures. It is also less influenced by political decisions. For example migration in Europe remained heavily politically regulated until the EU enlargement, and migration numbers are thus politically constrained.

This paper proceeds as follows: after a brief historical overview concerning the decline of the Habsburg Empire, the Iron Curtain and the reunion of the continent as far as these events concern our study in Section 2, we discuss our empirical strategy in Section 3 and present

our estimates of the trade boost and its decline among former Habsburg countries in Section 4. Section 5 discusses its implications and Section 6 additional robustness checks. Section 7 concludes.

2 Historical overview

Figure 1

Austro-Hungarian Empire in 1910 and modern country boundaries



Source: Habsburg map is from Jeffreys (2007), and the modern country boundaries come from Eurostat (2013).

We focus on the borders of the Habsburg Empire just before the outbreak of World War I as displayed in Figure 1. While the Habsburg family had ruled the Empire for many centuries with changing borders, unification attempts and the introduction of a centralized administration

came fairly late in the course of the 18th century.² For our purposes, it is important that the monarchy maintained a large, stable and well integrated market with large internal trade flows throughout its last decades:

In 1913 the Austro-Hungarian empire had a large degree of ethnic and linguistic diversity, not only across the empire as a whole, but also within major sub-state regions and cities. All parts of the monarchy were linked by a common official language, common legal institutions and administration as well as an expanding rail network. Great emphasis on free trade strengthened the economic integration and trade flows within the country throughout the 19th century (Good 1984). The monarchy possessed a fully integrated monetary union with full control maintained by the Austro-Hungarian bank in Vienna. Fiscally the Empire was run as a joint fiscal operation, with separate budgets in Austria and Hungary contributing to the same common imperial expenditures and debt services (Dornbusch 1991).

The monarchy consisted of 53 million people, 13 per cent of the total European population producing 10 per cent of Europe's GDP. As these numbers imply, the economic condition of the Austro-Hungarian monarchy in its final decades prior to 1913 was poor in comparison to other European countries.³ Before the collapse of the Empire, some internal trade barriers became visible in price data at the end of the 19th century, and nationalism was on the rise long before the collapse, and contributed to it (Schulze and Wolf 2009 and 2012). Yet these studies highlight that the Empire possessed a heavily integrated internal market at the beginning of the 20th century regardless of these tendencies. The monarchy further consisted of a well-functioning administration that unified the workings of many institutions across the countries it governed. The importance of the attachment of people to the imperial administration and

²In the 13th century Rudolf von Habsburg acquired the thrones of Austria and Styria, which his family held until the first half of the 20th century. The Habsburg monarchy expanded over the centuries mainly through skillful marriage policy, but also frequently lost territory in battle. The territory ruled by this family always incorporated different languages, customs and religions, which especially in the early years were allowed to flourish locally. There was little superstructure until the reforms under Maria Theresia and Josef II. helped by chancellors Kaunitz and Metternich in the course of the 18th.

³For example Schulze (2010) documents poor performance in terms of GDP per capita growth for the monarchy between 1870 and 1913, and even uses the term 'great depression' to describe the situation in the western half of the Empire in 1873.

its government, and the political, economic and cultural integration of its parts is highlighted by Clark (2013)⁴ and Boyer (1989)⁵ among other historians.

The end of World War I brought about a number of declarations of independence, which were sealed by the treaties of Saint Germain (1919) and Trianon (1920). New borders were drawn, new countries appeared, following considerations of ethnicity, language and trade networks. All the newly founded democracies on the territory of the former monarchy now included large numbers of ethnic and linguistic minorities. The newly founded Republic of Austria was left with 23 per cent of the population of the former monarchy. Trade between countries of the former monarchy remained high in the 1920s. De Menil and Maurel (1994) present some evidence for strong trade in the years 1924-26 among successor states of the former monarchy, roughly of the magnitude of trade within the British Empire at that time. They explain the persistence of trade pointing to common history, shared linguistic and cultural ties, and it mentions the importance of business and personal relations and networks - all parts of trading capital. Institutional drift, however, started. New and different currencies were introduced. For example, Hungary replaced the Austro-Hungarian korona by its own korona after independence only to replace it again by the pengo in 1925 and forint in 1946 following hyperinflation. The Austrian-Hungarian national railways was also split into multiple corporations, but traffic across the former monarchy continued at a significant pace.

World War II disrupted trade substantially, and it did not recover in the aftermath. Beginning in 1947, communist regimes in Central and Eastern Europe emerged under Soviet rule. The Sovietization of these economies caused a breakdown of their trade relations with the West, foreign trade was organised as a strict state monopoly. Much of this remaining trade was

⁴ “[The administration] was an apparatus of repression, but a vibrant entity commanding strong attachments, a broker among manifold social, economic and cultural interests. [...] most inhabitants of the empire associated the Habsburg state with the benefits of orderly government: public education, welfare, sanitation, the rule of law and the maintenance of a sophisticated infrastructure.”

⁵ “[...] competing popular and ethnic groups all had access to these public institutions [...] and these social groups quietly obtained some of their most sought after cultural attainments by means of these mechanisms, one might argue that the political and institutional history of the Empire presents [...] a state system that was not only more than the sum of its social parts, but was also psychologically consubstantial with those parts.”

arranged from Moscow, and negotiated at the highest political level, often as part of political bargains. An example for this was the export of goods worth 6.6 billion Austrian schillings in the aftermath of its independence in 1955 to the Soviet Union (Resch 2010). Pogany (2010) writes on the relationship between Austria and Hungary: "Economic ties [...] became insignificant in the years following World War II. Centuries-old relations were reduced to a minimal level [...]" While Moscow took control of trade in the Eastern countries, on the western side trade was also heavily politically influenced. The main driver of this was the Co-ordinating Committee for Multilateral Export Controls (COCOM), established in 1949, an institution to organise embargoes against Soviet countries. Austria did not formally become a COCOM member, but its Eastern trade was influenced heavily by it under the obligations coming with Marshall aid (Resch 2010). Economic cooperation was politically motivated and largely symbolic.

Large parts of infrastructure especially the railways were destroyed by the war - they would only partially be rebuilt taking into account the new borders that had emerged. An anecdote might highlight the poor recovery of infrastructure. The two capitals closest to each other in Europe are Vienna and Bratislava, at a distance of less than 60 kilometers. During the time of the monarchy there was a tramway that connected both cities, the "Pressburger Bahn". There has been no similar connection attempt since 1990, and thus the time to travel from one city to the other is now larger than it was in 1900.⁶

The Iron Curtain was an ideological boundary, but also primarily a geographical border. The most substantial cut to trade relations was brought about by the erection of the physical Iron Curtain, whose construction begun in 1949. The new border ran right through the former Habsburg countries, splitting Austria and the formerly Austrian parts of Italy from the rest. After the Hungarian Uprising of 1956 the already very limited possibility of transit ceased and all activity crossing this border was further suppressed. The border was sealed by barbed wire, land mines, high voltage fences, self shot systems and other means. Only people with

⁶In the discussion of the results below we provide further examples of abandoned infrastructure between East and West.

appropriate restrictions were allowed close to the border. As such the Iron Curtain presented a completely sealed border that cut all local economic activity (Redding and Sturm 2008).

Furthermore, the economies of Hungary and Czechoslovakia switched to central planning. Multinational companies were split, personal interaction and communication over the border became increasingly difficult and rare. To put the decline of trade in numbers, Austrian imports from Hungary fell from 10% in 1929 to 2% in 1959 and 1% in 1988, from Czechoslovakia from 18% to 4% and 1% in the same period (Butschek (1996), Lazarevic (2010); numbers indicate shares of total Austrian imports). At the same time, Hungarian imports from Austria went from 77% in 1911-13 to 60% in 1920, to 5% in 1946 and then to below 4% in 1974 (Pogany 2010). This collapse in trade includes estimates of black market activity.

The relationships of the West with Yugoslavia were different from those with Hungary and Czechoslovakia as Yugoslavia - despite being socialist and autocratic - maintained looser ties with Moscow (Lazerevic 2010). This allowed the United States to contribute to aid programs from 1952. Eventually this even led to the accession of Yugoslavia to GATT in 1966. Yugoslavia maintained sizable trade relationships with the West, which in some years even exceeded its trade levels with the Comecon countries. Given its coastal location, its main trade partners in the West between 1955 and 1986 were the EEA countries (Belgium, Luxembourg, France, Italy, the Netherlands, West Germany, Great Britain, Denmark and Ireland). For example, in 1986 Yugoslav exports to the EEA countries were over 7 times as large as exports to EFTA (Austria, Norway, Portugal, Sweden and Switzerland) (Lazerevic 2010), which suggests that trade between Yugoslavia and Austria was not particularly developed during the cold war.

We only mention two properties of the fall of the Iron Curtain which are important here, namely that it happened fast and that it was received by almost everyone on either side of the border with surprise (Redding and Sturm 2008).

These large changes of the map of Central Europe in the course of the 20th century are displayed in Figure 1. The map shows modern country boundaries and a map of the Habsburg Empire as of 1910. Table 1 shows the percentage of modern territory that was part of the Austro-Hungarian

Table 1
Habsburg Members

Country	Share of land that was Habsburg	East	Year of EU accession	Year of Euro adoption
Austria	1		1995	1999
Bosnia and Herzegovina	1	1		
Croatia	1	1	2013	
Czech Republic	1	1	2004	
Hungary	1	1	2004	
Italy	0.05		1952	1999
Poland	0.12	1	2004	
Romania	0.44	1	2007	
Serbia	0.25	1		
Slovakia	1	1	2004	2009
Slovenia	1	1	2004	2007
Ukraine	0.12	1		

Notes: Share of land that was Habsburg denotes the share of the area of the modern country that was part of the Habsburg monarchy in the year 1910. The Habsburg dummy consists of countries with values of 1 in Column 1. Missing values in the last two columns indicate no membership in 2013.

Empire for modern countries. Most of the countries that were part of the Empire are in the east, by which we indicate countries that were on the eastern side of the Iron Curtain, to which we count the countries of former Yugoslavia. These are Bosnia and Herzegovina, Croatia, the Czech Republic, Hungary, Slovakia, Slovenia as well as parts of Poland, Romania, Serbia and the Ukraine. On the western side of the Iron Curtain we only find Austria and South Tyrol, which is now part of Italy.

3 Empirical strategy and data

To investigate persistence after decades of Cold War of Austrian trade with countries east of the Curtain (Austria-East⁷) and members of the former Habsburg monarchy, we largely follow the methodology applied by HMR. They develop a methodology to address a closely related

⁷A variable indicating a trade flow between Austria and a country East of the Iron Curtain

question, and the similarity allows us to compare our estimates to theirs. We estimate gravity equations, to which we add $(Austria \times East) \times year$ and $Habsburg \times year$ dummies, which are our principal variables of interest. We run the estimations once jointly with Austria-East and Habsburg dummies, and once separately only including one set of dummies interacted with year. We use the boundaries of the Habsburg Empire in its last days. The gravity framework captures the counterfactual multinational trade had there been no Habsburg relationship. The $(Austria \times East) \times year$ and $Habsburg \times year$ indicators capture any trade in excess of what the gravity model alone would predict.

The well-known empirical and theoretical formulations of the gravity equation can be represented in the form

$$X_{int} = G_t C_{it}^{ex} C_{nt}^{im} \phi_{int} \quad (1)$$

where X_{int} denotes importer n 's total expenditure on imports from origin i in year t , G_t are year-specific common trade determinants, C_{it}^{ex} and C_{nt}^{im} are origin and destination attributes in a specific year, and ϕ_{int} measures bilateral effects on trade.⁸ Since there is no set of parameters for which equation 1 will hold exactly, the conventional approach is to add a stochastic term and estimate after log-linearizing. We follow the commonly practiced gravity approach (Head and Mayer 2013 or Egger 2000 provide overviews of this technique including a number of theoretical foundations which yield gravity equations). In particular, we estimate the equation

$$\ln(X_{int}) = \mu_{it} + \mu_{nt} + \gamma D_{int} + \delta_{int}^{(Aus \times East)} (Aus \times East)_{in} \times \mu_t + \delta_{int} H_{in} \times \mu_t + \delta_{int}^{east} H_{in}^{east} \times \mu_t + \epsilon_{int}, \quad (2)$$

where μ_{it} and μ_{nt} denote *origin* \times *year* fixed effects and *destination* \times *year* fixed effects respectively. The inclusion of sets of fixed effects interacted with year makes separate time fixed effects as in equation 1 multicollinear and thus redundant. Matrix D_{int} denotes pairwise covariates that may be time varying or not. We include bilateral indicators for the distance between the capitals of both countries, indicators for a shared border, an officially joint language, a joint

⁸We follow HMRs notation here.

spoken language, common legal institutions, common religion, common currency, the presence of a regional trade agreement as well as indicators if both are members of the EU, the Euro zone, or on the east of the Iron Curtain. All these standard bilateral control variables are taken from the standard source for this type of estimation, and precise definitions are given there (Mayer and Zignago 2005). In an effort to distill the main effect of interest as precisely as possible, we include as detailed fixed effects as possible. In particular, we include the variables shared border, common official and spoken language and common legal institutions as time varying dummy variables to flexibly account for the many possible changes in the cultural and political climate in Europe during this period. These sets of control variables make it redundant to control for the standard right hand side variables measuring the size of countries, such as population and income, and allow only to include bilateral variables that vary over time.

The main variables of interest are the bilateral coefficients on the interaction terms $(Aus \times East)_{in} \times \mu_t$, dummies indicating if the observed flow is between Austria and a country East of the Iron Curtain, and $H_{in} \times \mu_t$, which indicates if both countries were part of the Austro-Hungarian monarchy in year t . μ_t is a time fixed effect. Since we are only interested in Habsburg trade that crosses the Iron Curtain, we also include a $H_{int}^{east} \times \mu_t$ variable, which captures all trade east of the Curtain (there is only Austria west of the Curtain in our baseline specification). Intuitively we estimate how the fraction of Austria-East and Habsburg surplus trade evolves over time. We use a comprehensive set of indicators to capture the different types of Habsburg trade. First, we restrict our measure of Habsburg economies to only those which were fully part of the Habsburg monarchy: Austria, Hungary and former Czechoslovakia. We argue that this is the safest approach as including other economies which were only partly part of the Empire, such as Italy, may pick up effects not specific to the Habsburg relationship.

If we were to control for attributes of the exporter and importer using GDP per capita and populations our specification would suffer from bias caused by omission of “multilateral resistance” terms (Anderson and van Wincoop 2003). Multilateral resistance terms are functions of the whole set of ϕ_{int} from equation 1. We thus adopt the preferred method of the literature,

which is to introduce exporter-year and importer-year fixed effects.⁹ This full fixed effects approach absorbs the exporting and importing specific effects (see Egger 2000). Exporter- and importer-year fixed effects do not work for unbalanced two-way panels as pointed out by Baltagi (1995). If actual bilateral data are not balanced, as is the case in HMR (2010), one should use the least square dummy variable (LSDV) approach. However, this concern is not relevant to our aggregated European data set which is balanced.¹⁰ We therefore adopt the full fixed effects approach, even though this approach has the disadvantage that we can not observe the coefficients of some in gravity models typical right hand side variables.

We also address the issue of missing and zero trade observations. Zero and missing observations may be due to mistakes or reporting thresholds, but bilateral trade can actually be zero. We treat all missing trade observations as zero trade. Our linear-in logs specification of equation 2 removes all observations of zero trade, thus introducing a potential selection bias. In the literature, it has been common to either drop the pairs with zero trade or estimate the model using $X_{int} = 1$ for observations with $X_{int} = 0$ as the dependent variable.¹¹ In our baseline specification we choose to drop the zero pairs, but also run a robustness check replacing zeros as ones. We also adopt the Poisson Pseudo-Maximum-Likelihood (PPML) estimation technique. A natural step would be to use Tobit which incorporates the zeros, but it assumes log normality and homoskedasticity on the error term, so we prefer PPML. PPML incorporates zeros and parameters can be estimated consistently with structural gravity as long as the data are consistent, i.e. provided the expectation of ϵ conditional on the covariates equals one (Santos Silva and Tenreyro 2006). The estimation method is consistent in the presence of heteroskedasticity¹², and provides a natural way to deal with zero values of the dependent variable. We believe this preferable to other estimators without further information on the heteroscedasticity. However, it may be severely biased when large numbers of zeros are handled in this way (Martin and

⁹See Feenstra (2004) who addresses different techniques to take care of multilateral resistance within the gravity framework.

¹⁰In Appendix A, we list our data sources and discuss our approach to minimize data inaccuracies.

¹¹See for example Felbermayr and Kohler (2006).

¹²Consistency of estimating equation 2 depends critically on the assumption that ϵ_{int} is statistically independent of the explanatory variables.

Pham 2009). There are only 53 missing trade observations out of 13,200 observations in our data since we focus on estimating trade among European economies. The majority of missing trade values involve Albania as a trading partner for which trade may indeed be zero or so small that it falls below a minimum reporting threshold.¹³

The estimation equation for the Poisson Pseudo-Maximum-Likelihood (PPML) estimator expresses equation 2 as

$$X_{int} = \exp(\mu_{it} + \mu_{nt} + \gamma D_{int} + \delta_{int}^{(Aus \times East)} (Aus \times East)_{in} \times \mu_t + \delta_{int} H_{in} \times \mu_t + \delta_{int}^{east} H_{in}^{east} \times \mu_t) u_{int}, \quad (3)$$

where $u_{int} = \exp(\epsilon_{int})$.

Even though we include all the usual controls our vector of bilateral variables may remain incomplete, unobserved linkages end up in the error term. To capture possible omitted variables in ϵ_{int} , we estimate two additional econometric techniques: a lag dependent variable specification and a specification with origin-destination (bilateral or dyad) fixed effects. The lagged dependent variable would absorb unobserved influences on trade that evolve gradually over time. Including a lagged dependent variable biases coefficient estimates in short panel models.¹⁴ Monte Carlo experiments suggest that the bias can be non-negligible with panel lengths of $T=10$ or even $T=15$ (Dell et al. 2013). However, the time series dimension of our panel ($T=21$) is likely long enough such that biases can probably be safely considered second-order. Furthermore, the lagged dependent variable technique will not deliver consistent estimates if there is a fixed component in the error term that is correlated with the control variables. We thus also run a specification with bilateral fixed effects. We can still obtain estimates of our coefficients of interest as our variation of interest is also varying over time (the Habsburg and Austria-East dummies are interacted by year). The bilateral fixed effects specification identifies the effect of Habsburg membership based on temporal (within-bilateral) variation. In the bilateral fixed effects specification, all time invariant bilateral variables drop out.

¹³See the Data Appendix for more details on the data set.

¹⁴Nickell (1981) shows that the bias declines at rate $\frac{1}{T}$.

To summarize, we estimate the Habsburg and Austria-East coefficients of interest using four different estimation techniques closely following HMR: simple OLS, Poisson Pseudo Maximum Likelihood (PPML), Lag dependent variable specification and bilateral fixed effects (Dyad FE), each with a strong set of fixed effects. Our typical estimation has in excess of 13,000 observations, and is robust to heteroscedasticity. We run these four estimations on the joint set of Habsburg and Austria-East dummies and separately with one set of dummies interacted with year.

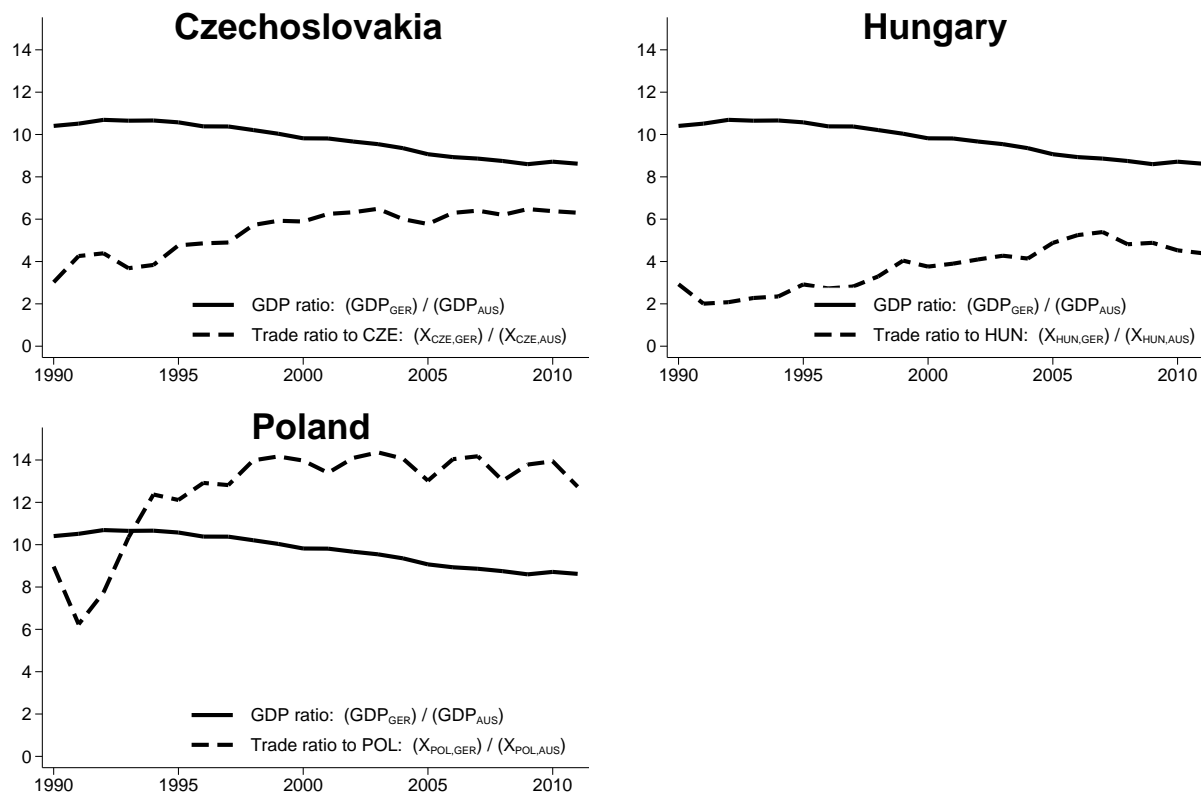
The sources and details related to the construction of our dataset are documented in Appendix A. All data we use and our treatment of them is standard throughout the related literature. Here we just summarize a few decisions that we take. The dataset we use contains all countries of Europe in the years from 1990 until 2011, the first year for which Comtrade data is available for all the countries of Europe after the fall of the Iron Curtain and the last year for which we found a complete set of data when we embarked on this project. We clean Comtrade data using the methodology of Feenstra et al. (2005). Trade data for the years before 1990 are available from sources other than Comtrade, which we do not use given concerns about the comparability of data. We use data for Europe only as we think that it provides a cleaner sample of countries to run the proposed tests than the entire world would, given greater similarity of shipping and other technology in Europe. The first OLS assumption that the correct model is specified is easier to justify in a sample of more similar countries. We aggregate a few countries to maintain a balanced panel, see details of this in Table 6 in the Appendix.

Before turning to the regression results, we present some descriptive statistics which document the Habsburg trading surplus relative to Germany¹⁵. Figure 2 considers Germany, Austria, Czechoslovakia, Poland and Hungary. Czechoslovakia borders on both Germany (both East and West) and Austria, thus differences in distance seem negligible. Moreover, changes in multilateral resistance should also be fairly similar.¹⁶ We plot the ratio of German to Austrian

¹⁵We later use Germany as a placebo as it shares the language with Austria, and also directly borders many eastern countries.

¹⁶A surge in French or Spanish GDP would have similar effects on Germany and Austria.

Figure 2
Descriptive GDP and trade ratios
(ratios on year)



GDP $\left(\frac{GDP_{Gt}}{GDP_{At}}\right)$ and the ratio of German trade with Czechoslovakia to Austrian trade with Czechoslovakia $\left(\frac{X_{Ger,Cze,t}}{X_{Aus,Cze,t}}\right)$. If Habsburg did not matter we would expect the ratio of trade to mirror the ratio of GDP (using GDP as measure for market and production size). However, we observe a large gap. In 1990 the German economy is roughly ten times as large as the Austrian economy. At the end of our sample period this ratio falls to about 8.5. However, trade with Czechoslovakia is only three times as large for Germany and this ratio rises to just over 6 over the sample period. We also conduct the same exercise for Hungary and Poland. On the one hand, Hungary - yet another core Habsburg member - displays an even starker gap. The trade ratio rises from approximately 2 to 4.5. These graphs highlight that Austrias trade with these two eastern countries was highly overproportional given its size relative to Germany, but that

this surplus steadily lowered over time. Even Poland, which we do not regard as a Habsburg member, since only 10 per cent of its mass belonged to the monarchy, and which does not share a border with Austria, exported less than ten times its Austrian exports to Germany in 1990. All the countries show the central empirical finding in this figure, a strong Austrian trade surplus that weakens over time. We now turn to a more rigorous exploration of these suggestive observations.

4 Results

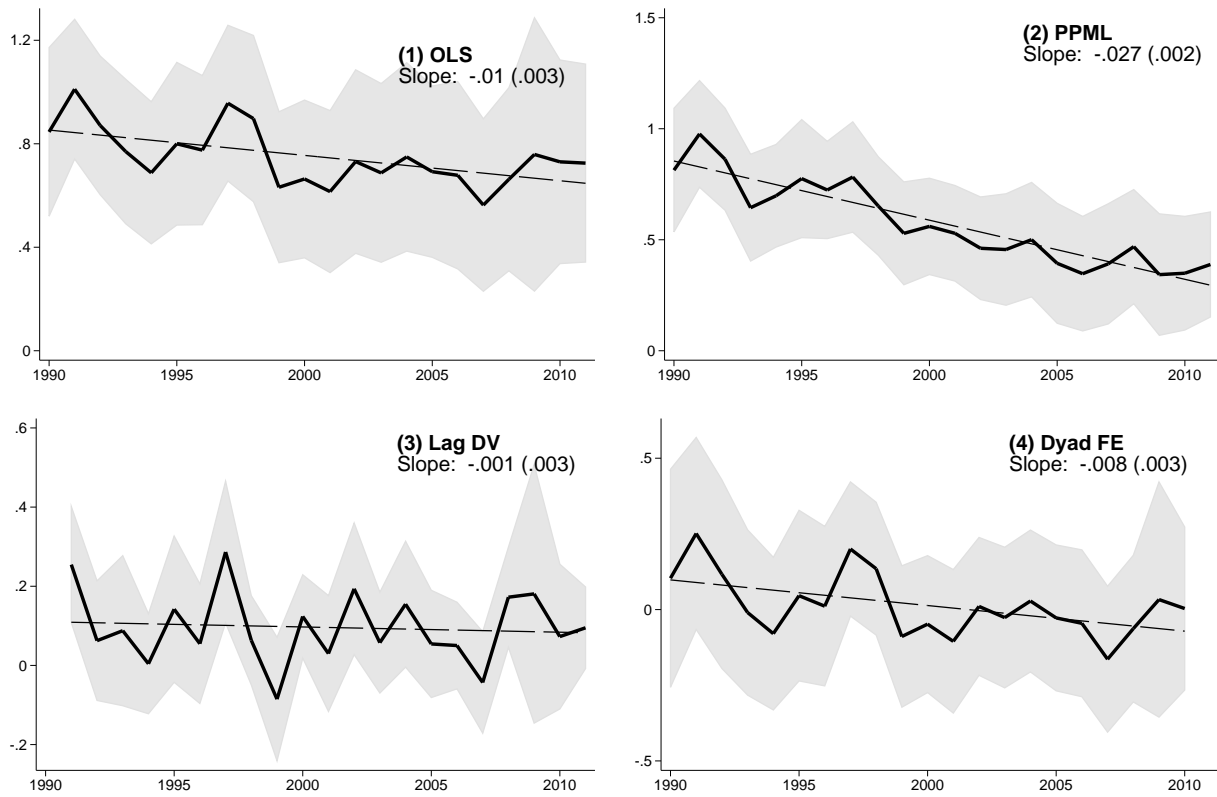
We run three sets of regressions. First, we include Austria-East dummies to investigate surplus trade with the East. Second, we control for Austria-East and Habsburg jointly, and find that the effect for Austria-East becomes insignificant once we control for Habsburg. Third, we restrict the investigation to Habsburg members. The third of these specification is most important for our conclusion. We present it in detail and focus on the main elements of the other two.¹⁷ It is worth emphasizing that we use origin interacted with year fixed effects and destination times year fixed effects separately in all of these regressions. The Habsburg trade surplus coefficients are bilateral and vary annually by construction and thus are not multicollinear with the inclusion of this strong set of control variables and fixed effect.

Figure 3 shows the Austria-East by year interaction terms from an estimation with Austria-East coefficients. These results show a statistically significant effect in 1990 which declines linearly and monotonically in both OLS and PPML estimation techniques. The other two techniques show no significant results. Once we add controls for the Habsburg \times year coefficients, this trend becomes insignificant in our preferred specification. A weak downward slope remains only in the PPML specification, statistically insignificant from zero, see Figure 4. These graphs suggest that Austria-East does not play a pronounced role once we control for Habsburg membership.

¹⁷Tables reporting coefficients of control variables and the exact Habsburg and Austria-East coefficients are omitted for length but available upon request.

Figure 3

*Estimation with Austria-East - year fixed effects only
Austria-East coefficient plots*

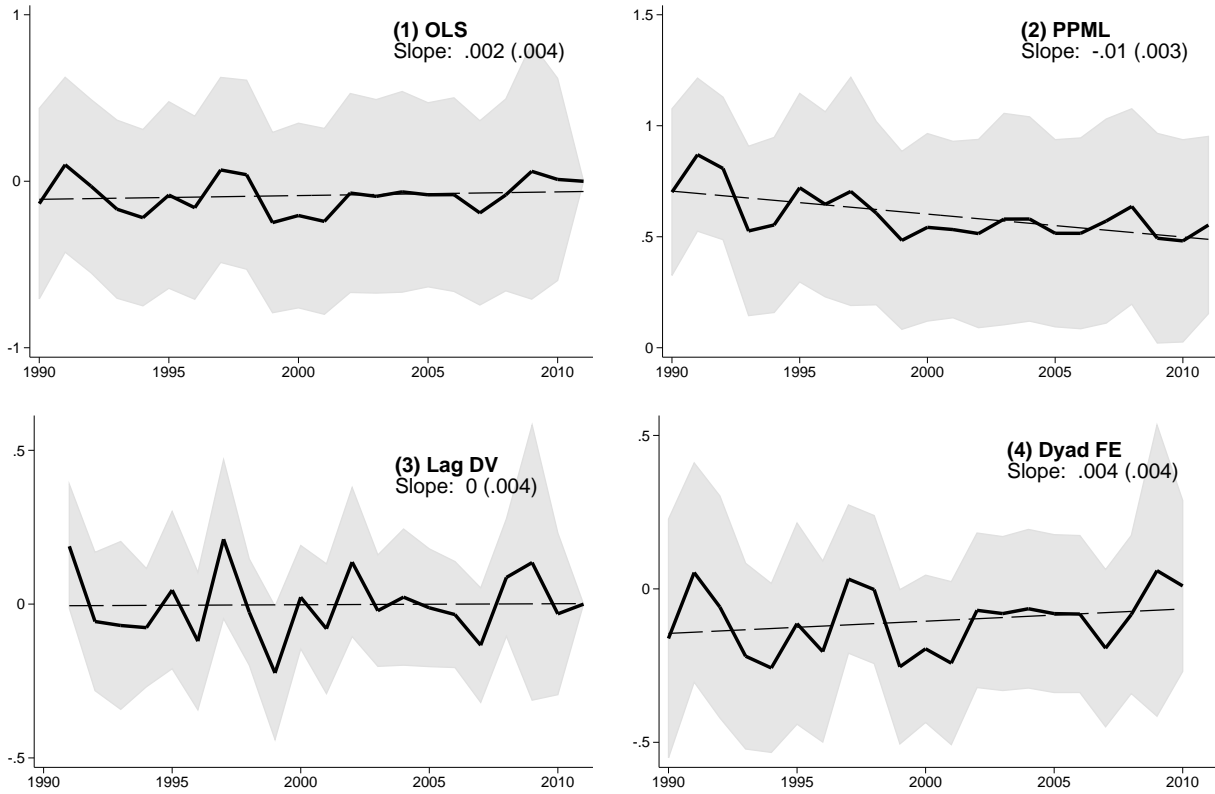


Notes: Coefficients of the $(Aus \times East) \times year$ interaction term in equation 2 and equation 3 with 95 per cent confidence intervals. Line of best fit with slope and s.e. are also recorded.

In Table 2 we proceed to estimate equations 2 and 3 and above with only coefficients for Habsburg membership. As expected, distance negatively impacts trade in all specifications where we can include this control variable. The displayed time varying dyadic effects tend to show the expected sign, but coefficients vary across specifications. The latter is expected, as these specifications differ in many respects, for example the PPML code is written to be estimated using levels rather than natural logarithms of the left hand side variable. Santos Silva and Tenreyro (2006) also find a significantly smaller effect of geographical distance. Some of the coefficients show unexpected signs, such as negative coefficients for common currency and “Both EU”. This might reflect that some wealthy economies such as Norway and Switzerland

Figure 4

*Joint estimation with Austria-East dummies and Habsburg - year fixed effects
Austria-East coefficient plots*



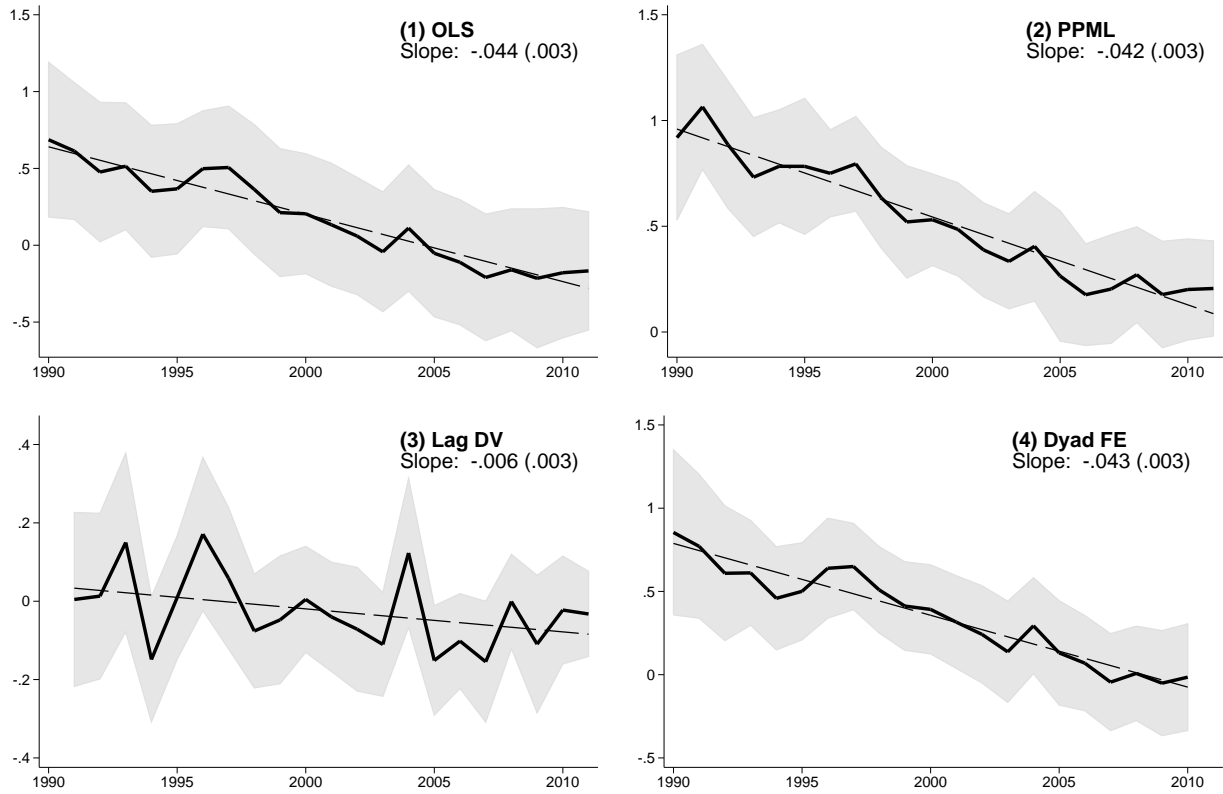
Notes: Coefficients of the $(Aus \times East) \times year$ interaction term in equation 2 and equation 3 with 95 per cent confidence intervals. Line of best fit with slope and s.e. are also recorded.

are not part of EU and Euro. The PPML coefficient of distance exactly corresponds with that of HMR. In Table 3 we plot the Habsburg \times year coefficients, which we interpret to be the trade surplus of Habsburg countries relative to what we would expect if trade followed our gravity model. These coefficients are also depicted in Figure 5. All four estimation methods show a steady decrease of the Habsburg trade bonus over time. We confirm that the first and last estimated coefficients are statistically significantly different to each other.¹⁸ The downward slope of the trend given in Figure 5 is strongly significant in all of the specifications, and the slope is remarkably similar. It shows a strongly statistically significant, monotonic decline with a slope of around -0.044. Thus the main results, namely that the cultural component of trading

¹⁸F-test Prob > F values are OLS: .008; PPML: .001; Lag DV: .768; and Dyad FE: .000.

Figure 5

*Estimation with Habsburg - year fixed effects only
Habsburg coefficient plots*



Notes: Coefficients of the Habsburg by year interaction term $H_{in} \times \mu_t$ in equation 2 and equation 3 with 95 per cent confidence intervals. Line of best fit with slope and s.e. are also recorded. Restricted sample: includes only countries that were fully part of the Habsburg monarchy: Austria, Hungary, former Czechoslovakia and former Yugoslavia. Coefficients of control variables are reported in table 3.

capital declines over time, is insensitive to our estimation method. Note that the Habsburg trade bonus is large in the first year after the collapse of the Iron Curtain. For example, in the specification of column (1) the additional trade in the year 1990 is 0.69, which is about three times as large as the trade bonus from two countries having a regional trade agreement (0.24), two times as large as both countries having the same religion (0.34) and 1.6 times as large as both countries being located in Eastern Europe. This magnitude also corresponds to additional trade by a factor of $e^{0.69}$, which is close to 2. The trade boost declines steadily and becomes statistically insignificant about 10 years after the fall of the Iron Curtain. Note that

Table 2
Estimation with Habsburg - year fixed effects only
Coefficients of control variables

	(1)	(2)	(3)	(4)
<i>Dependent variable:</i>	OLS $\ln(x_{int})$	PPML x_{int}	Lag DV $\ln(x_{int})$	Bilateral FE $\ln(x_{int})$
<i>Variable of interest:</i>				
Habsburg - year fixed effects	– Coefficients are reported in Table 3 and Figure 5 –			
<i>Time fixed dyadic effects:</i>				
Log distance	-1.181*** (0.0239)	-0.641*** (0.0113)	-0.213*** (0.0215)	
Common religion	0.344*** (0.0336)	0.108*** (0.108)	0.0614*** (0.0162)	
Both East	0.419*** (0.0491)	0.116*** (0.0455)	-0.0358 (0.0304)	
Shared border - year	Yes	Yes	Yes	Yes
Official common language - year	Yes	Yes	Yes	Yes
Common language spoken - year	Yes	Yes	Yes	Yes
Common legal institutions - year	Yes	Yes	Yes	Yes
<i>Time varying dyadic effects:</i>				
Common currency	-0.197*** (0.0358)	0.00541 (0.0339)	-0.00482 (0.0188)	-0.0192 (0.0307)
Regional trade agreement	0.237*** (0.0560)	0.288*** (0.0531)	0.0576 (0.0411)	0.344*** (0.0570)
Both EU	-0.0119 (0.0396)	-0.108*** (0.0319)	0.0175 (0.0198)	-0.00553 (0.0222)
Both Euro	-0.0862*** (0.0280)	0.271*** (0.0311)	-0.0451*** (0.0157)	-0.0302 (0.0363)
Lagged exports			0.831*** (0.0126)	
Origin country - year fixed effects	Yes	Yes	Yes	Yes
Destination country - year fixed effects	Yes	Yes	Yes	Yes
Bilateral fixed effects	No	No	No	Yes
Habsburg - east - year fixed effects	Yes	Yes	Yes	Yes
Observations	13,147	13,200	12,518	13,147
R-squared	0.937	0.966	0.982	0.976

Notes: This table and Table 3 display different coefficients from the same regressions. Columns 1, 2 and 4 provide estimates of equation 2, Column 2 from equation 3. Table 3 shows the Habsburg \times year coefficients. These coefficients are depicted in Figure 5. Stars denote statistical significance on the level of one (***) , five (**) and ten (*) per cent. Robust standard errors used.

the coefficients with Habsburg alone show stronger effects, smaller margins of error, and are more precisely estimated than the Austria-East coefficients.

One concern about these results might be that the opening of the trade relations between East and West might be dynamic, increasing or decreasing, in the first years after the opening of the Iron Curtain because of various reasons other than the decline of historic and cultural

Table 3
Estimation with Habsburg - year fixed effects only
Habsburg coefficients

	(1) OLS	(2) PPML	(3) Lag DV	(4) Dyad FE
<i>Dependent variable:</i>	$\ln(x_{int})$	x_{int}	$\ln(x_{int})$	$\ln(x_{int})$
1990	0.687*** (0.257)	0.919*** (0.199)		0.854*** (0.253)
1991	0.613*** (0.227)	1.065*** (0.151)	0.00457 (0.113)	0.771*** (0.220)
1992	0.477** (0.232)	0.885*** (0.154)	0.0131 (0.108)	0.609*** (0.206)
1993	0.514** (0.210)	0.732*** (0.143)	0.150 (0.116)	0.612*** (0.160)
1994	0.351 (0.219)	0.784*** (0.136)	-0.149* (0.0812)	0.459*** (0.158)
1995	0.367* (0.216)	0.783*** (0.164)	0.00948 (0.0804)	0.501*** (0.149)
1996	0.498*** (0.192)	0.750*** (0.105)	0.171* (0.0997)	0.639*** (0.153)
1997	0.506** (0.203)	0.795*** (0.114)	0.0584 (0.0921)	0.650*** (0.153)
1998	0.363* (0.215)	0.634*** (0.122)	-0.0761 (0.0740)	0.509*** (0.132)
1999	0.212 (0.212)	0.521*** (0.135)	-0.0477 (0.0831)	0.412*** (0.136)
2000	0.205 (0.199)	0.531*** (0.110)	0.00470 (0.0690)	0.392*** (0.136)
2001	0.134 (0.204)	0.485*** (0.112)	-0.0399 (0.0712)	0.316** (0.142)
2002	0.0599 (0.194)	0.388*** (0.113)	-0.0714 (0.0805)	0.242 (0.149)
2003	-0.0428 (0.199)	0.334*** (0.114)	-0.110 (0.0675)	0.137 (0.155)
2004	0.112 (0.209)	0.405*** (0.132)	0.123 (0.0969)	0.294** (0.147)
2005	-0.0520 (0.211)	0.265* (0.157)	-0.151** (0.0712)	0.131 (0.160)
2006	-0.111 (0.208)	0.176 (0.123)	-0.102* (0.0617)	0.0691 (0.146)
2007	-0.209 (0.210)	0.203 (0.131)	-0.154** (0.0786)	-0.0448 (0.149)
2008	-0.159 (0.202)	0.271** (0.115)	-0.000727 (0.0614)	0.00778 (0.145)
2009	-0.215 (0.230)	0.177 (0.128)	-0.109 (0.0895)	-0.0509 (0.161)
2010	-0.179 (0.216)	0.201* (0.122)	-0.0225 (0.0702)	-0.0150 (0.163)
2011	-0.167 (0.196)	0.206* (0.115)	-0.0325 (0.0554)	

Notes: This table and Table 2 display different coefficients from the same regressions. Columns 1, 2 and 4 provide estimates of equation 2, Column 2 from equation 3. Coefficients are depicted in Figure 5. Stars denote statistical significance on the level of one (***), five (**) and ten (*) per cent. Robust standard errors used.

Table 4
Germany Placebo Coefficients

	(1) OLS	(2) PPML	(3) Lag DV	(4) Dyad FE
<i>Dependent variable:</i>	$\ln(x_{int})$	x_{int}	$\ln(x_{int})$	$\ln(x_{int})$
1990	-0.230 (0.375)	0.342 (0.225)		-0.130 (0.238)
1991	-0.287 (0.285)	0.113 (0.213)	-0.213** (0.0981)	-0.278 (0.181)
1992	-0.140 (0.294)	0.196 (0.171)	0.0853 (0.0944)	-0.0514 (0.175)
1993	0.106 (0.286)	0.431*** (0.167)	0.228*** (0.0809)	0.186 (0.162)
1994	-0.158 (0.318)	0.358** (0.142)	-0.227 (0.196)	-0.110 (0.155)
1995	-0.0570 (0.346)	0.317* (0.180)	0.108 (0.0817)	-0.0191 (0.150)
1996	-0.0678 (0.307)	0.304* (0.184)	-0.0319 (0.0632)	-0.0151 (0.138)
1997	-0.00333 (0.296)	0.395** (0.183)	-0.000351 (0.0804)	0.0679 (0.132)
1998	-0.0299 (0.291)	0.490*** (0.177)	-0.0406 (0.0752)	0.0433 (0.141)
1999	-0.00454 (0.313)	0.506*** (0.177)	0.0522 (0.0796)	0.104 (0.137)
2000	-0.0777 (0.330)	0.416** (0.178)	-0.0934 (0.0848)	0.0192 (0.143)
2001	-0.0327 (0.305)	0.460*** (0.170)	0.0385 (0.0572)	0.0688 (0.134)
2002	-0.0519 (0.329)	0.530*** (0.158)	-0.0353 (0.118)	0.0493 (0.169)
2003	0.0254 (0.274)	0.544*** (0.144)	0.0483 (0.0480)	0.133 (0.138)
2004	0.0509 (0.263)	0.462*** (0.159)	0.0112 (0.0753)	0.160 (0.133)
2005	-0.0569 (0.281)	0.316* (0.189)	-0.106 (0.0753)	0.0521 (0.136)
2006	-0.115 (0.310)	0.268 (0.184)	-0.0585 (0.0903)	-0.00521 (0.139)
2007	-0.145 (0.287)	0.214 (0.175)	-0.0530 (0.0634)	-0.0417 (0.134)
2008	-0.183 (0.288)	0.154 (0.172)	-0.0743 (0.0656)	-0.0802 (0.136)
2009	-0.156 (0.291)	0.0905 (0.166)	-0.00779 (0.0813)	-0.0530 (0.143)
2010	-0.147 (0.291)	0.0673 (0.166)	-0.0296 (0.0813)	-0.0469 (0.143)
2011	-0.102 (0.323)	0.102 (0.170)	0.0114 (0.103)	

Notes: Placebo exercise: Habsburg coefficients with Germany instead of Austria. Columns 1, 2 and 4 provide estimates of equation 2, Column 3 from equation 3. Stars denote statistical significance on the level of one (***), five (**) and ten (*) per cent. Robust standard errors used.

ties. For example, the installation or reuse of transport infrastructure might suggest a dynamic trade relationship between an eastern and a western country, or the slow establishment of personal exchange and interaction. In both these examples we would expect an increasing relationship, but there may be others. To mitigate concerns that such effects drive our results we run a placebo exercise in which we estimate “Habsburg” effects on a relationship other than Habsburg, for which we do not expect the same decay of cultural ties. We chose Germany as the placebo country, which shares the language with Austria, and also a direct border with many eastern countries. When we estimate the trading relationship with Germany instead of Austria being the “Habsburg” country west of the curtain, we do not find significant relationships. These results are reported in Table 4, and in this table we use the same specification as applied in Tables 2 and 3. The PPML estimates display an increase of the effect for intermediate years, which may point to some form of catch up in the interim years. This effect however shows no monotonic trend in t and is not robust to the other specifications displayed. Most of the coefficients in Table 4, including in the PPML specification are not statistically significant. We interpret this finding to cast doubt on the relevance of other dynamic effects shaping initial trade relationships.

5 Discussion of estimates

We consider a number of possible explanations why the countries of the monarchy trade more with each other in the first years after the collapse of the Iron Curtain. First, this result might just be a consequence of a miss-specification of the gravity equation. A highly structural approach of the kind we employ is easily prone to introduce noise when looking at specific bilateral trade volumes. If for example we would overestimate the distance between Austria and the eastern countries the residuals for these bilateral observations in a standard gravity model would be positive.¹⁹ Or there might be some natural geographic advantage that facilitates

¹⁹Given the location of Vienna in the east of Austria we actually underestimate the distance relative to the harmonic mean suggested in Rauch (2014).

trade between these countries, and this reason might have brought about both the Monarchy before 1918 and the trade surplus after 1989. However, explanations and examples of this type could cast doubt on the existence of a static Habsburg trade surplus. What we observe is a trade bonus that declines linearly and monotonically over time, and it does so robustly across a number of very different estimation methods. This dynamic result is hard to explain as a simple statistical property of miss-specification or measurement error. If it was a purely mechanical specification error our placebo exercise that replaces Austria with Germany would be prone to suffer from the same problem. We further verify that our main specification is robust to the use of different measures of distance, such as the distance between the most populated city, and two measures of weighted distances.

Second, this difference might have to do with better existing transport infrastructure dating back to the times of the monarchy. However, most of this infrastructure was unused and laid bare during the Cold War and by 1989 was degenerated. The main rail lines connecting Austria with the East were abandoned, for example the track connecting Bratislava and Vienna, the Pressburger Bahn, in 1945 the rail to the Czech Republic via Laa an der Thaya in 1945 and the connection via Fratres-Slavonice, also in 1945. All these lines have not been revived until today. Transcontinental connections such as Vienna-Hamburg or Vienna-Berlin have switched permanently to run via Passau instead of Prague. There is also evidence that reconstruction and construction of new networks was slow after 1990, for example in Hungary “there were no significant changes in the lengths of the linear transport network in the first half of the 1990s” (Erdösi 1999). Further, even if a degenerated rail line provides a strong advantage to trade we would not expect this surplus to contribute immediately given the time it takes to renovate such a network. Thus we would expect a slight rise of the Habsburg bonus in the first years, as this infrastructure is brought back to full capacity.

Third, this trade bonus might just reflect the specific history of bilateral developments after 1989 that are unconnected to history. Austria might have had a starting advantage, after all it was between Austria and Hungary that the Iron Curtain first opened. While it is true that

the Iron Curtain was symbolically opened first between Austria and Hungary²⁰, things moved rapidly after that. The first symbolic opening on August 19th 1989 was less than three months before the opening of borders within Germany on November 9th. The first time Germans could flee was on September 10th and 11th. Most of the people who fled in the two months before the broader opening were East Germans. Thus the head start was neither long, nor specifically beneficial to the Austrian economy.

Forth, it may be that language barriers are initially favorable for bilateral trade from Austria to the East, given that citizens in the eastern countries still speak German with higher proportion than in other European countries. This explanation is similar to the interpretation we favor, however the placebo exercise using Germany suggests that the German language can not explain this trade surplus, and in fact does not seem to contribute to its decline.

Fifth, there could be cultural factors other than the monarchy that help to foster trust between the countries that we call Habsburg countries. It might be for instance that Austria's political neutrality helped to win trust of eastern trading partners. This however should predict a general increase in trade for Austria with all eastern countries, rather than the selected members of the former monarchy, and would be absorbed by the interactions of Austria with all of Eastern Europe that we include. Further, we would not expect this or similar effects to decline over time, as contrary to the monarchy, Austria's political neutrality persists.²¹

Sixth, there may be historical legacies and cultural forces that foster trust between these countries. For example, the surnames of the Austrian and Czech prime ministers at the first official state visit between Austria and the Czech Republic after 1990 provide a suggestive anecdote: Vranitzky is a typical Czech last name²² while Klaus is a German first name. The cultural proximity of the Habsburg countries is also present in the eurovision voting data by Felbermayr and Toubal (2012).²³ Historic, cultural and genetic similarities establish trust which in turn

²⁰Curiously enough in the presence of the would-have-been-emperor Otto von Habsburg.

²¹Despite joining the EU and the Euro, neutrality remains an important part of the Austrian political identity, and is a core element of its constitution and political identity.

²²It means in Czech so much as from the town of Vranice.

²³In the Felbermayer and Toubal (2012) data available from Toubal's website we compute the mean eurovision score given from country i to j and from j to i for each year and country pair. We define Habsburg as the

supports trade relationships. The monarchy was also the last memory of a functioning state before the wars and communism for many people in the East, and there may have been the impulse to return to what worked last when the chance appeared. This is the explanation that we favor. Why should this trade bonus deteriorate relative to other countries over time? The answer might partly be found in HMR as these factors are part of trading capital, and as other forms of trading capital they tend to deteriorate over time. In this particular case, as other countries of Western Europe establish relationships based on trust with the East the Austrian advantage disappears as countries reorient themselves towards the new geopolitical reality. At the same time the last inhabitants on both sides of the Iron Curtain who personally remember the monarchy died in the two decades after 1990, which further may contribute to the weakening importance of the monarchy in culture. This explanation is consistent with our observation that the effect does not hold for the Eastern countries once we control for the Habsburg effect, and is stronger in magnitude and significance for Habsburg alone than for all the countries of the east.

To compare these findings to HMR we conduct a few simple calculations using our estimates. HMR write that on average trade remains 31 per cent higher after 60 years following their OLS specification, which they obtain by exponentiating the surplus trade effect and subtracting one. Using this same methodology and the numbers provided in their paper, this implies that colonial relationships lead to a trade boost of 350 per cent in the year of colonial break up. We can use our estimates directly to produce equivalent estimates. Following column (1) in Table 3 our corresponding numbers are surplus trade of 69 per cent in year zero and 21 per cent in year 10. We assume for mathematical convenience and sake of simplicity that the decay is linear. This assumption is consistent with the graphs provided by HMR, and by our own Figure 5, and implies a negative slope of 5.3 for the decay of trading capital, and 4.8 for the decay of

countries in their dataset that we count as part of the monarchy in our main measure, these are Austria, Bosnia and Herzegovine, Croatia, Hungary, Yugoslavia and Slovenia. Conditional on time fixed effects these Habsburg countries have a score that is 0.048 higher than the mean of the sample, a difference that is significant at the 5 percent level of significance.

the cultural part of it.²⁴ We can conclude that the decay of the cultural component of trading capital is 10 per cent slower than the decay of all trading capital. This comparison does not require us to specify the start year of the decay.

Remarks on the estimated share of the stock of trading capital that is cultural are less precise, as we do not know which year we should use as the equivalent year for colonial break up of the Habsburg monarchy. 1989 is not the end of the colonial relationship. In fact, we do not know the end we should use in our example, as we do not know if the heavy involvement of the Soviets in the East sped up cultural memory loss, or froze it compared to a situation in the free market. We can estimate the year in which the stock of cultural trading capital is exhausted, which is when the curves in Figure 5 becomes zero, around 2010. If we assume that the Soviet Union worked as a freezer of cultural capital and count the years 1918 - 1945 and 1990-2010 as years of decay we end up with an expected boost of 225.6 per cent in year zero, compared to 350 per cent implied in HMR, which would amount to 65 per cent. Assuming that after the Iron Curtain fell people looked to the year before the wars and communism and that the decay was only for 20 years 1990-2010 we estimate the historical and cultural component. It amounts to 27 per cent of trading capital, if we normalize the start year such that trading capital and its cultural component become zero at the same point in time, we estimate four fifths. We include this exercise as a natural comparison, but of course it is rather crude, and not the main contribution of this paper.

6 Robustness

We verify that our results are robust to a number of alternative specifications and estimation methods. We omit the detailed numbers and figures for these robustness tests for reasons of space, they are available upon request.

²⁴As an additional robustness check, we repeat our analysis including a year trend and Habsburg \times year interaction term. This is a more parametric analysis compared to our main specification as it forces the slope to be linear. We find a statistically significant negative slope on the interaction term in all specifications.

First, we cluster standard errors by bilateral country pairs. We verify that this does not change the significance of coefficients reported in Figure 5 in a meaningful way. It should be quite apparent from the monotonic downward slope visible in that figure that the significance of this downward slope is strongly robust to other or even more demanding specifications.

Second, we define the Habsburg measure in different ways. We include all countries that are at least partly former Habsburg members, thus adding Italy, Poland, Romania, Serbia and Ukraine to the countries covered by the Habsburg fixed effects. The Habsburg coefficients remain fairly similar, yet become somewhat statistically weaker. This is as expected, given that this measure includes areas that were outside of the monarchy and thus should add more noise than signal. We run a separate regression including only Yugoslavia as additional Habsburg member, and one in which we code Yugoslavia as being west of the Curtain. Yugoslavia is an ambiguous case given its unique history during the 20th century. The monotonic downward slope is strongly robust to these specifications.

Third, we address the concerns brought forward by Anderson and Yotov (2012), that a disadvantage of pooling gravity data over consecutive years is that dependent and independent variables cannot fully adjust in a single year's time. We address this concern using the suggested methodology of keeping only intervals of 3 or 5 years. The downward slope in Panel (1) in Figure 5 becomes $-.038$ (.004) when keeping only every third year from 1990, and $-.034$ (.002) when keeping only every fifth year. Our findings seem not to be much changed by this adjustment.

Finally, as discussed in earlier sections we repeat the analysis but treat zero and missing observations in different ways. We omit zeros from the sample and replace zeros by 1. Again, our findings do not seem to be altered by these specifications.

7 Conclusion

We analyze the trends and magnitudes of trade volumes between Austria and Eastern countries after 1990. We estimate the initial magnitude of the surplus trade levels of Austria with Eastern countries to be large, about four times the effect of a currency union. This effect deteriorates rapidly, in a monotonic and linear way, and disappears within one or two decades. In investigating the reasons for this positive trade shock we find that it is significant only for the members of the former Habsburg monarchy, and not the other countries East of the Iron Curtain. By eliminating alternatives, we conclude that the most likely explanation is that these forces relate to historical legacies and cultural memory parts of trading capital. These forces, established under Habsburg rule, seem to have survived over four decades and gave an initial trade boost, which disappeared rapidly as countries arranged themselves with the new geopolitical circumstances.

References

- [1] Algan, Yann, and Pierre Cahuc, 2010, Inherited trust and growth, *The American Economic Review*, 2060-2092.
- [2] Anderson, James E., Van Wincoop, Eric, Gravity with Gravitas: A Solution to the Border Puzzle, *The American Economic Review*, 93.1, 170-192.
- [3] Anderson, James E., and Yoto V. Yotov. Gold standard gravity. *National Bureau of Economic Research Working Paper*, No. 17835, 2012.
- [4] Baltagi, B.H., 1995. *Econometric Analysis of Panel Data*. Wiley.
- [5] Becker, Sascha O., Boeckh, K., Hainz, C., and Woessmann, Ludger, The Empire Is Dead, Long Live the Empire! Long-Run Persistence of Trust and Corruption in the Bureaucracy, *The Economic Journal*, 2014.
- [6] Boyer, John W. "Some Reflections on the Problem of Austria, Germany, and Mitteleuropa." *Central European History* 22.3-4 (1989): 301-315.
- [7] Butschek, Felix, 1996, *Statistische Reihen zur Österreichischen Wirtschaftsgeschichte*, WIFO Wien.
- [8] Clark, Christopher, 2013, *The Sleepwalkers, How Europe went to war in 1914*, Penguin Books.
- [9] De Menil, Georges and Mathilde Maurel, 1994, Breaking up a Customs Union: the Case of the Austro-Hungarian Empire in 1919, *Weltwirtschaftliches Archiv*, 130, 553-75.
- [10] Dell, Melissa, Benjamin F. Jones, and Benjamin A. Olken, 2013, What do we learn from the weather? The new climate-economy literature, *National Bureau of Economic Research*, w19578.
- [11] Disdier, Anne-Celia, and Thierry Mayer, 2007, Je t'aime, moi non plus: Bilateral Opinions and International Trade, *European Journal of Political Economy*, 23.4, 1140-1159.
- [12] Dixon, William J., and Bruce E. Moon, 1993, Political similarity and American foreign trade patterns, *Political Research Quarterly*, 46.1, 5-25.
- [13] Djankov, Simeon and Caroline Freund, 2002, Trade Flows in the Former Soviet Union, 1987 to 1996, *Journal of Comparative Economics*, 30, 76-90.
- [14] Dornbusch, R., 1991, Monetary Problems of Post-Communism: Lessons from the end of the Austro-Hungarian Empire, *Weltwirtschaftliches Archiv*, 128, 391-424.
- [15] Egger, Peter, 2000, A note on the proper econometric specification of the gravity equation, *Economics Letters*, 66.1, 25-31.
- [16] Egger, Peter, and Andrea Lassmann, 2013, *The Causal Impact of Common Native Language on International Trade: Evidence from a Spatial Regression Discontinuity Design*, Centre for Economic Policy Research.
- [17] Erdösi, Ferenc, 'Regional Characteristics of the Development of the Transportation and Telecommunication during the Systematic Change', in Hajdu (edt.) 'Regional processes and spatial structures in Hungary in the 1990s', Center for regional studies, Pecs 1999.

- [18] Feenstra, R., 2004. *Advanced International Trade*. Princeton University Press, Princeton.
- [19] Feenstra, Robert C., Robert E. Lipsey, Haiyan Deng, Alyson C. Ma, and Hengyong Mo, 2005, World trade flows: 1962-2000, No. w11040, National Bureau of Economic Research.
- [20] Felbermayr, Gabriel, and Jasmin Gröschl, 2013, Within US Trade and the Long Shadow of the American Secession, *Economic Inquiry*.
- [21] Felbermayr, Gabriel J., and Wilhelm Kohler, 2006, Exploring the intensive and extensive margins of world trade, *Review of World Economics*, 142.4, 642-674.
- [22] Felbermayr, G. J., and Toubal, F., 2010, Cultural proximity and trade, *European Economic Review*, 54(2), 279-293.
- [23] Good, D. F., 1984, *The Economic Rise of the Habsburg Empire 1750-1918*, Berkeley CA, University of California Press.
- [24] Guiso, Luigi, Paola Sapienza, and Luigi Zingales, 2009, Cultural biases in economic exchange?, *The Quarterly Journal of Economics* 124.3, 1095-1131.
- [25] Head, Keith and Thierry Mayer, 2013, Gravity Equations: Workhorse, Toolkit, and Cookbook, *Handbook of International Economics*, 4, Gopinath, Helpman and Rogoff (eds.).
- [26] Head, Keith, Thierry Mayer and John Ries, 2010, The erosion of colonial trade linkages after independence, *Journal of International Economics*, 81, 1-14.
- [27] Jeffrey, Diarmuid, 2007, *The Austro-Hungarian Empire - New Holland History Maps*, New Holland Publishers Ltd.
- [28] Lameli, Alfred, Volker Nitsch, Jens Südekum and Nikolaus Wolf, 2013, Same Same But Different: Dialects and Trade, IZA Discussion Paper No. 7397.
- [29] Lazarevic, Zarko, 2010, Yugoslavia: Economic aspects of the position between East and West, in *Gaps in the Iron Curtain: Economic Relations between Neutral and Socialist Countries in Cold War Europe*. Edited by Gertrude Enderle-Burcel, Piotr Franaszek, Dieter Stiefel, and Alice Teichova. Krakow: Jagiellonian University Press, ISBN: 978-8-323-32532-1.
- [30] Martin, W., Pham, C., 2009, Estimating the gravity model when zero trade flows are frequent, World Bank manuscript.
- [31] Mayer, Thierry, and Soledad Zignago. 2011, Notes on CEPII's distances measures: The GeoDist database.
- [32] McCallum, John, 1995, National borders matter: Canada-US regional trade patterns, *The American Economic Review*, 85.3, 615-623.
- [33] Melitz, Jacques, and Farid Toubal, 2012, Native language, spoken language, translation and trade.
- [34] Michaels, G., and Zhi, X., 2010, Freedom fries, *The American Economic Journal: Applied Economics*, 2(3), 256-281.
- [35] Nickell, Stephen, 1981, Biases in dynamic models with fixed effects, *Econometrica*, 49.6, 1417-1426.

- [36] Nitsch, Volker and Nikolaus Wolf, 2011, Tear Down this Wall: On the Persistence of Borders in Trade, Working Paper.
- [37] Pogany, Agnes, 2010, Co-operation through the Iron Curtain: economic relations between Austria and Hungary after the Second World War, in *Gaps in the Iron Curtain: Economic Relations between Neutral and Socialist Countries in Cold War Europe*. Edited by Gertrude Enderle-Burcel, Piotr Franaszek, Dieter Stiefel, and Alice Teichova. Krakow: Jagiellonian University Press, 2009. ISBN: 978-8-323-32532-1.
- [38] Rauch, Ferdinand, 2014, A Fable of Bees and Gravity, Oxford Departmental Working Paper.
- [39] Redding, Stephen J. and Daniel M. Sturm, 2008, The Costs of Remoteness: Evidence from German Division and Reunification, *The American Economic Review*, 98(5), 1766-1797.
- [40] Resch, Andreas, 2010, Forty years of foreign trade between Austria and the CMEA area, in *Gaps in the Iron Curtain: Economic Relations between Neutral and Socialist Countries in Cold War Europe*. Edited by Gertrude Enderle-Burcel, Piotr Franaszek, Dieter Stiefel, and Alice Teichova. Krakow: Jagiellonian University Press, 2009. ISBN: 978-8-323-32532-1.
- [41] Schulze, Max-Stephan, 2010, Patterns of growth and stagnation in the late nineteenth century Habsburg economy, *European Review of Economic History*, 4, 311-340.
- [42] Schulze, Max-Stephan and Nikolaus Wolf, 2009, On the origins of border effects: insights from the Habsburg Empire, *Journal of Economic Geography*, 9, 117-136.
- [43] Schulze, Max-Stephan and Nikolaus Wolf, 2012, Economic nationalism and economic integration: the Austro-Hungarian Empire in the late nineteenth century, *Economic History Review*, 65, 2, 652-673.
- [44] Silva, JMC Santos, and Silvana Tenreyro, 2006, The log of gravity, *The Review of Economics and statistics*, 88.4, 641-658.
- [45] Thom, Rodney, and Brendan Walsh, 2002, The effect of a currency union on trade: Lessons from the Irish experience, *European Economic Review*, 46.6, 1111-1123.
- [46] Umana Dajud, C, 2013, Political Proximity and International Trade, *Economics and Politics*, 25.3, 283-312.
- [47] United Nations, Definitions of European Countries, obtained from <http://unstats.un.org/unsd/methods/m49/m49regin.htm> in June 2013.
- [48] United Nations World Development Indicators, obtained from <http://databank.worldbank.org/data> in June 2013.

Appendix A: Data

The main source we rely on to obtain bilateral trade flows is the standard United Nations Commodity Trade Statistics Database (COMTRADE). While a cleaned version of these data are available (Feenstra et al. 2005) we use the raw data as it gives us more years after 2000, up to 2011. We undertake some data cleaning ourselves, as described below. We verify that our main results are robust to using the Feenstra data up to 2000.

We download both aggregate trade data.²⁵ Our original sample of annual aggregate trade flow contains 32,386 observations reported as imports from 47 European economies over the period 1990 to 2011. The year 1990 marks the fall of the Iron Curtain and 2011 is the most recent year for which a full set of reported trade statistics are available. We use the 4-digit Standard International Trade Classification, revision 2, commodity code (SITC2) as it is the most detailed product classification for which the COMTRADE database offers data spanning back to 1989, and it is the same as used by Feenstra et al. (2005). Individual observations are identified by origin-destination-year dimensions. Table 5 lists all countries in the dataset.

The first problem we encounter is that of missing reported trade values. These are especially common in early years after a break-up or creation of an economy in the aftermath of the fall of the Iron Curtain. For example, Slovakia only starts reporting its trade flows in 1994, one year after the break-up of Czechoslovakia. Following the approach taken by Feenstra et al. (2005) we prefer importer reported statistics, assuming these are more accurate than those trade values reported as exports. Wherever possible we use exporter reported trade flows if the import reported trade flows is missing for a country-pair. By this method we replace 2,293 missing observations in the total trade dataset - about ten per cent of observations.

Within Comtrade, import reported data is valuated CIF (cost, insurance and freight) and export reported data is valuated FOB (free on board). FOB-type values include the transaction value of the goods and the value of services performed to deliver goods to the border of the exporting

²⁵COMTRADE data are revised over time. The data described here were accessed on June 23, 2013 via the website <http://comtrade.un.org>.

country. CIF in addition includes the value of the services performed to deliver the goods from the border of the exporting country to the border of the importing country. Following the methodology of HMR we correct this discrepancy by discounting CIF values by 10 per cent. We compare the import and exported reported trade statistics whenever both reports are available. If we ignore all exporter and importer reported values that differ by a factor of greater than two either way, we find that reports valuated as CIF are, on average, exceed FOB reported values by a factor 1.12, which confirms the HMR methodology.

We use UN definitions (2013) to determine which countries to include as Europe. We start with all European countries, but undertake some aggregations to balance the data. Some of the nation break-ups following the fall of the Iron Curtain occur within key economies of the former Habsburg Empire. We prefer to work with a panel of stable country boundaries so that compositional differences do not drive our results. Fortunately these border changes consisted of splits in such a way that they can easily be mapped into larger units that remain stable over time. We aggregate trade flows to the smallest possible country which we can observe continually over the sample period. Table 5 lists all country groups and years that merge/split and that we aggregate. After aggregating we drop within country trade (i.e. trade flows that were formerly reported as Czech Republic to Slovakia). Note that we only observe trade statistics from the Former Yugoslav Republic of Macedonia starting in 1993. Usually COMTRADE country borders changes only occur at the beginning of a calendar year. There is one notable exception to this: Both Serbia and Serbia-Montenegro report trade data in 2005. We keep and aggregate these observations within the same year as it might be due to Serbia Montenegro breaking up at some point during the year, such that Serbia starts reporting its imports from some month when Serbia Montenegro ceases to do so. Consequently, our measure of Yugoslavia contains reports from former Yugoslavia in 1989-1991, reports from four countries in 1992, five countries from 1992 to 2004, six countries in 2005 where both Serbia and Serbia Montenegro report data, and six countries from 2006 and thereafter as Montenegro replaces Serbia-Montenegro. We drop a number of countries of the former Soviet Union from the dataset (Belarus, Ukraine, Latvia, Lithuania and Estonia as well as the Russian Federation). With the

dissolution of the Soviet Union these countries and the political turmoil these economies only appear in the trade statistics two years after the beginning of the sample period (in 1992). We decide that the cost of introducing noise by including them is greater than the benefit of gaining some more observations, especially as these countries are not directly relevant for the question we study. Given these changes, the resulting panel of countries we work with is balanced throughout all the years we study.

Table 5

List of European Economies and our aggregation method

Albania	Fmr Yugoslavia	Poland
Andorra*	France	Portugal
Austria	Germany	Rep. of Moldova**
Belarus**	Gibraltar*	Romania
Belgium***	Greece	Russian Federation**
Belgium-Luxembourg	Vatican City State*	San Marino*
Bosnia Herzegovina***	Hungary	Serbia***
Bulgaria	Iceland	Serbia and Montenegro***
Croatia	Ireland	Slovakia***
Czech Rep.***	Italy	Slovenia***
Czechoslovakia	Latvia**	Spain
Denmark	Lithuania**	Sweden
Estonia**	Luxembourg***	Switzerland
Faeroe Isds*	Malta	TFYR of Macedonia***
Finland	Montenegro**	Ukraine**
Fmr Dem. Rep. of Germany***	Netherlands	United Kingdom
Fmr Fed. Rep. of Germany***	Norway	

Notes: Trade values estimated following the methodology of Feenstra et al. (2005). * Only appear as partner. Do not report trade statistics themselves. ** Former Soviet Union with changing borders. *** Aggregated with another country to balance the sample.

We drop reported destinations that are designated “bunkers” (UN code 837), “free zones” (838), “special categories” (839) and “areas not elsewhere specified (nes)” (899). Moreover, we drop the highly incomplete observations reporting trade with San Marino, the Vatican, Andorra, Faroer Islands and Gibraltar. Table 6 reports the elements by year for the countries that involve aggregation for our dataset.

Table 6
Aggregated Economies

Country	Years observed
Germany	
Germany	1991 - 2012
Fmr Dem. Rep. of Germany	1989 - 1990
Fmr Fed. Rep. of Germany	1989 - 1990
Czechoslovakia	
Czechoslovakia	1989 - 1992
Czech Rep.	1993 - 2012
Slovakia	1993 - 2012
Yugoslavia	
Fmr Yugoslavia	1989 - 1991
Slovenia	1992 - 2012
Bosnia Herzegovina	1992 - 2012
Croatia	1992 - 2012
TFYR Macedonia	1993 - 2012
Serbia and Montenegro	1992 - 2005
Serbia	2005 - 2012
Montenegro	2006 - 2012
Belgium-Luxembourg	
Belgium-Luxembourg	1989 - 1998
Belgium	1999 - 2012
Luxembourg	1999 - 2012

We add a number of standard control variables, relying on standard sources. We obtain data on aggregate GDP and populations from the World Banks World Development Indicators (2013). We compute GDP per capita as GDP divided by population, both as reported by the UN. Following our methodology of aggregating trade flows, we derive GDP and population measures for Yugoslavia and Czechoslovakia as the sum of GDP and populations of the underlying countries. For example, Czechoslovakia's population is calculated as the sum of the Czech Republics and Slovakian populations. GDP is measured in current US dollar (millions) and, in accordance to trade flows, not deflated. We obtain a number of gravity variables from the CEPII distance database used in Mayer and Zignago (2005).²⁶ These include the country-specific variable landlocked as well as dyadic variables common border, common (official) language, shared language

²⁶These data are available at <http://www.cepii.fr/anglaisgraph/bdd/distances.htm> (accessed June 19, 2013).

spoken by at least 9 per cent of the population, and distance. As measure of distance we use distance between capitals as it is a consistent measure we can apply to the aggregated economies. For example, we use Prague as the capital of Czechoslovakia throughout the sample period. The variables time difference, shared legal history, area and shared religion are from the gravity data set provided by HMR (2010).²⁷ We also use this source to add time varying variables GATT/WTO membership, membership of RTAs (Regional Trade Agreements) and a common currency indicator. Since the HMR dataset only spans the years up to 2006, we update the time varying variables using data from the WTO.²⁸ Finally, we construct dummy variables for EU and Eurozone membership.²⁹ This latest source also allows us to generate a variable that indicates membership in the common currency.

²⁷These data are available at <http://strategy.sauder.ubc.ca/head/sup> (accessed June 19, 2013).

²⁸Here we rely on two sources, http://www.wto.org/english/thewto_e for GATT/WTO membership and <http://rtais.wto.org/UI/PublicPreDefRepByEIF.aspx> for RTAs (both sites accessed June 19, 2013).

²⁹We use the EU web site http://europa.eu/about-eu/countries/index_en.htm (accessed July 10, 2013)